


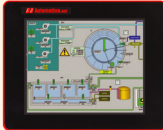


EZ12 Series Selection Guide & Specifications

| EZ12 Series 6", 7", 8" and 10" Model Specifications | | | | |
|---|---|---|---|---|
| Part Number | EZ12-T6C-EE | EZ12-T7C-EE | EZ12-T8C-EE | EZ12-T10C-EE |
| |  |  |  |  |
| Specification | 6" TFT Color Slim Bezel | 7" Wide TFT Color Slim Bezel | 8" TFT Color Slim Bezel | 10" TFT Color Slim Bezel |
| Enclosure | NEMA 4, 4X (indoor) | | | |
| Display Type | 5.7" TFT (65K Colors) | 7" TFT (65K Colors) | 8" TFT (65K Colors) | 10.4" TFT (65K Colors) |
| Display View Area | 4.65"x3.5" (118.1 x 88.9mm) | 6.49"x3.9" (164.9 x 100mm) | 6.05"x4.55" (153.7 x 115.8mm) | 8.31"x6.22" (211.07 x 158mm) |
| Screen Pixels | 320x240 | 800 x 480 | 800 x 600 | 800 x 600 |
| Brightness/Life | 400 nits/75,000 hours (Even at extreme Operating Temp.) | | | |
| Backlight | White LED Strips | | | |
| Touch Screen | 5-wire Analog Resistive Touch Screen | | | |
| Service Power | 24 VDC (20-30 VDC Operating Range), 1.5A switching supply recommended | | | |
| Operating Temperature | 0-55°C (32 - 131°F) | | | |
| Power | Backlight OFF | 8 Watts @ 24 VDC | | |
| | Backlight ON | 15 Watts @ 24 VDC | 15 Watts @ 24 VDC | 15 Watts @ 24 VDC |
| Storage Temp. | -25 to 65°C (-13 to 149°F) | | | |
| Humidity | 10-95% RH, non-condensing | | | |
| Electrical Noise | NEMA ICS 2-230 showering arc ANSI C37.90a-1974 SWC Level C Chattering Relay Test | | | |
| Withstand Voltage | 1000 VDC (1 Minute), between power supply input terminal and protective ground (FG) | | | |
| Insulation Res. | Over 20 MΩ , between power supply input terminal and protective ground (FG) | | | |
| Vibration | 5 to 55Hz 2G for 2 hours in the X, Y and Z axes | | | |
| Shock | 10G for under 12ms in the X, Y and Z axes | | | |
| # of Screens | Up to 999 limited by memory | | | |
| Real Time Clock | Built into Panel (PLC clock is still accessible if available) | | | |
| Screen Saver | Yes, Backlight off | | | |
| Communication Ports | Download/Programming port: 9-pin D-Sub (female) - RS-232 PLC Communication port: 15-pin D-Sub (female) - RS-232/RS-422/RS-485 Ethernet (10/100 Base-T): Programming & PLC Communication port USB Type A: Programming/Data Logging port USB Type B: Programming port Micro SD slot: Datalogging | | | |
| External Dimensions | 6.15"x8.05"x2.10" (156.20x204.50x53.34 mm) | 6.15"x8.05"x1.82" (156.20x204.50x46.23 mm) | 8.75"x10.90"x1.87" (222.25x276.76x47.60 mm) | 10.62"x13.59"x1.82" (269.90x345.06x46.23 mm) |
| Weight | 1.7 lbs | 1.7 lbs | 2.9 lbs | 3.8 lbs |

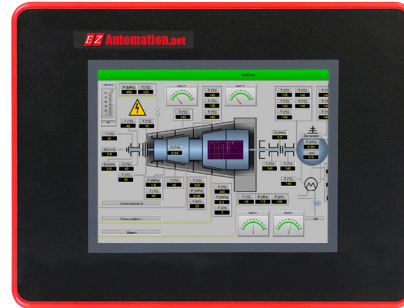
EZ12 Series 6" TFT Color Panels

6" Color EZ12 Series (5.7" TFT)

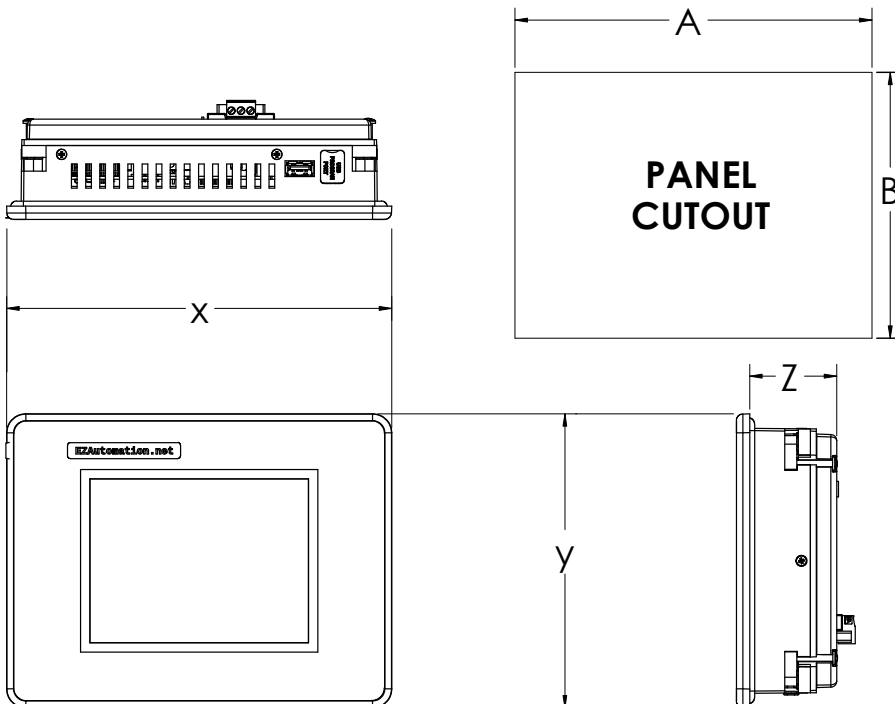
EZ12 Series 6" panels have a 5.7" diagonal color TFT, 65k colors, 320 x 240 screen resolution, 2 Serial Ports, 2 USB Ports, Built in Ethernet, 1 MicroSD card slot. All Serial/Ethernet Drivers included.

EZ12 Series Touchpanel feature:

- User level hardware & software private labeling
- All Serial and Ethernet Drivers included
- 1 Ethernet Port 10/100 Base T
- USB Type B port for programming
- USB Type A port for Data Logging and program upload
- MicroSD card slot for Datalogging
- 2 Serial Ports (1 Rs232, 1 Rs232/422/485)
- 65K Colors
- 320 x 240 pixel resolution
- NEMA 4/4X (Indoor)
- 4 Year Warranty
- 2.10" (53.34mm) installed depth
- 4,000 symbols library
- Programmed with All new EZTouch Editor



EZ12-T6C-E



EZ12 PANEL DIMENSIONS

| UNIT SIZE | X | Y | Z |
|-----------|----------------|----------------|--------------|
| 6" | 8.05 [204.50] | 6.15 [156.20] | 2.10 [53.34] |
| 7" | 8.05 [204.50] | 6.15 [156.20] | 1.82 [46.23] |
| 8" | 10.90 [276.76] | 8.75 [222.25] | 1.87 [47.60] |
| 10" | 13.59 [345.06] | 10.62 [269.90] | 1.82 [46.23] |

PANEL CUTOUT DIMENSIONS

| UNIT SIZE | A | B | DEPTH |
|-----------|----------------|---------------|--------------|
| 6" | 7.47 [189.73] | 5.57 [141.48] | 3.60 [91.44] |
| 7" | 7.47 [189.73] | 5.57 [141.48] | 3.32 [84.33] |
| 8" | 9.17 [232.92] | 7.04 [178.82] | 3.38 [85.68] |
| 10" | 11.87 [301.50] | 8.90 [226.00] | 3.32 [84.28] |

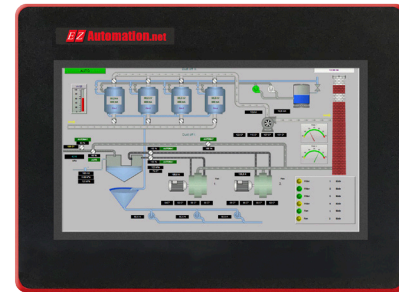
EZ12 Series 7" (Wide) TFT Color Panels

7" (Wide) Color EZ3 Series (7" TFT)

EZ12 Series 7" Wide Screen panel have a 7" diagonal color TFT, 65k colors, 800 x 480 screen resolution, 2 Serial Ports, 2 USB Ports, Built in Ethernet, 1 MicroSD card slot. All Serial/Ethernet Drivers included

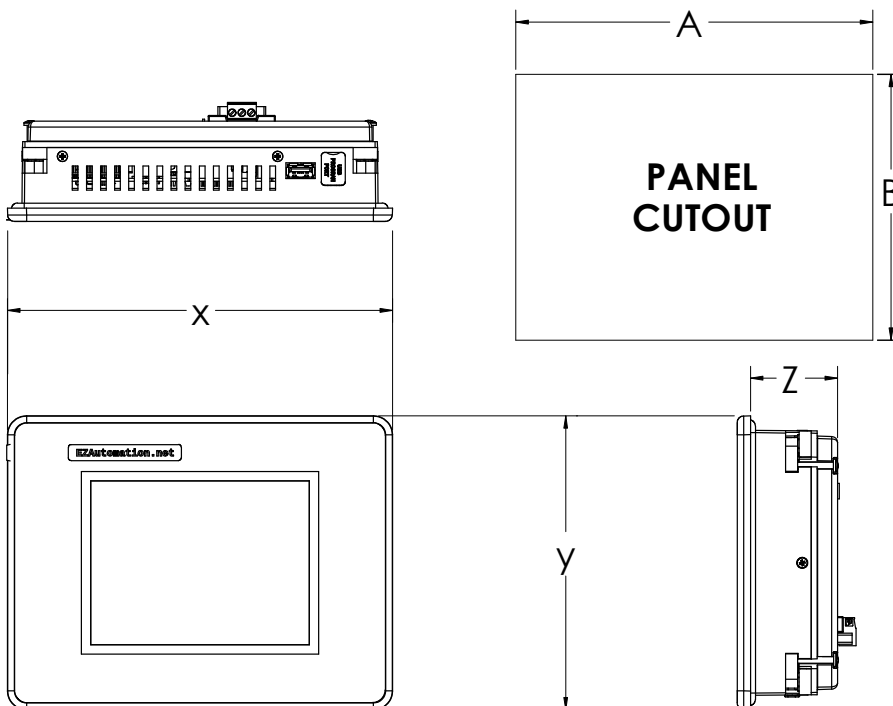
E12 Series Touchpanel feature:

- User level hardware & software private labeling
- All Serial and Ethernet Drivers included
- 1 Ethernet Port 10/100 Base T
- USB Type B port for programming
- USB Type A port for program upload
- MicroSD card slot for Datalogging
- 2 Serial Ports (1 Rs232, 1 Rs232/422/485)
- 65K Colors
- 800 x 480 pixel resolution
- NEMA 4/4X (Indoor)
- 4 Year Warranty
- 1.82" (46.23mm) installed depth
- 4,000 symbols library
- Programmed with All new EZTouch Editor



EZ12-T7C-E

EZ Touch HMI



EZ12 PANEL DIMENSIONS

| UNIT SIZE | X | Y | Z |
|-----------|----------------|----------------|--------------|
| 6" | 8.05 [204.50] | 6.15 [156.20] | 2.10 [53.34] |
| 7" | 8.05 [204.50] | 6.15 [156.20] | 1.82 [46.23] |
| 8" | 10.90 [276.76] | 8.75 [222.25] | 1.87 [47.60] |
| 10" | 13.59 [345.06] | 10.62 [269.90] | 1.82 [46.23] |

PANEL CUTOUT DIMENSIONS

| UNIT SIZE | A | B | DEPTH |
|-----------|----------------|---------------|--------------|
| 6" | 7.47 [189.73] | 5.57 [141.48] | 3.60 [91.44] |
| 7" | 7.47 [189.73] | 5.57 [141.48] | 3.32 [84.33] |
| 8" | 9.17 [232.92] | 7.04 [178.82] | 3.38 [85.68] |
| 10" | 11.87 [301.50] | 8.90 [226.00] | 3.32 [84.28] |

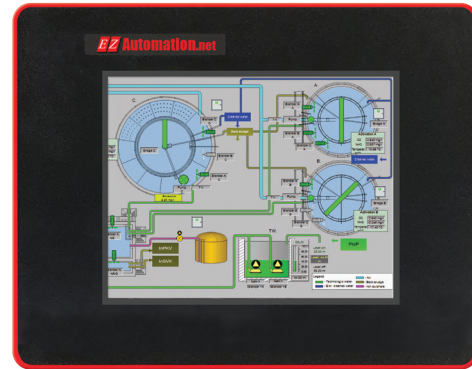
E12 Series 8" TFT Color Panels

8" Color E12 Series

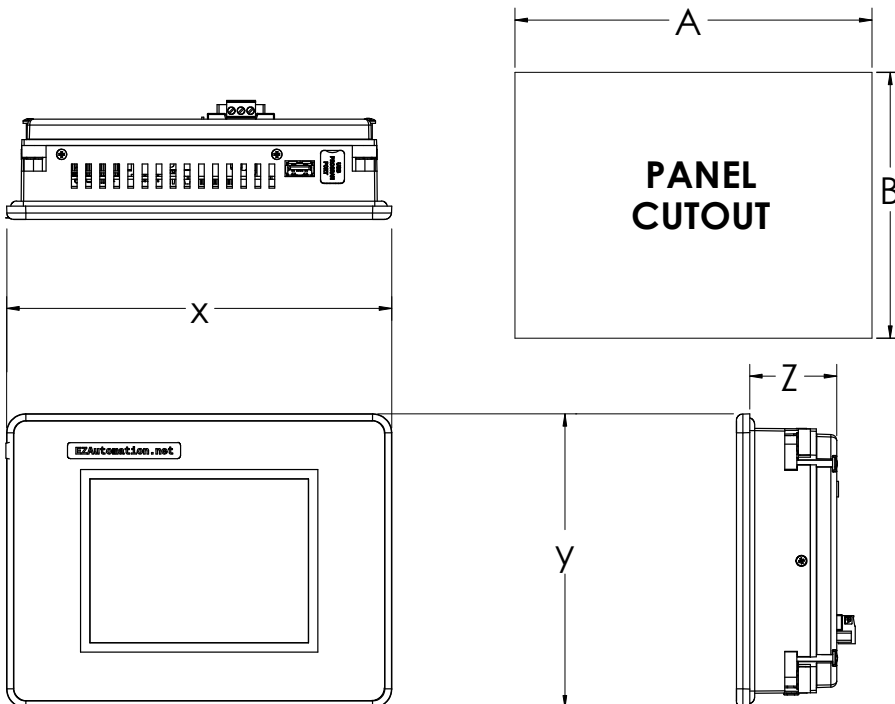
E12 Series 8" panels have a 8" diagonal color TFT, 65k colors, 800 x 600 screen resolution, 2 Serial Ports, 2 USB Ports, Built in Ethernet, 1 MicroSD card slot. All Serial/Ethernet Drivers included

EZ12 Series Touchpanel feature:

- User level hardware & software private labeling
- All Serial and Ethernet Drivers included
- 1 Ethernet Port 10/100 Base T
- USB Type B port for programming
- USB Type A port for program upload
- MicroSD card slot for Datalogging
- 2 Serial Ports (1 Rs232, 1 Rs232/422/485)
- 65K Colors
- 800 x 600 pixel resolution
- NEMA 4/4X (Indoor)
- 4 Year Warranty
- 1.87" (47.60mm) installed depth
- 4,000 symbols library
- Programmed with All new EZTouch Editor



EZ12-T8C-E



EZ12 PANEL DIMENSIONS

| UNIT SIZE | X | Y | Z |
|-----------|----------------|----------------|--------------|
| 6" | 8.05 [204.50] | 6.15 [156.20] | 2.10 [53.34] |
| 7" | 8.05 [204.50] | 6.15 [156.20] | 1.82 [46.23] |
| 8" | 10.90 [276.76] | 8.75 [222.25] | 1.87 [47.60] |
| 10" | 13.59 [345.06] | 10.62 [269.90] | 1.82 [46.23] |

PANEL CUTOUT DIMENSIONS

| UNIT SIZE | A | B | DEPTH |
|-----------|----------------|---------------|--------------|
| 6" | 7.47 [189.73] | 5.57 [141.48] | 3.60 [91.44] |
| 7" | 7.47 [189.73] | 5.57 [141.48] | 3.32 [84.33] |
| 8" | 9.17 [232.92] | 7.04 [178.82] | 3.38 [85.68] |
| 10" | 11.87 [301.50] | 8.90 [226.00] | 3.32 [84.28] |

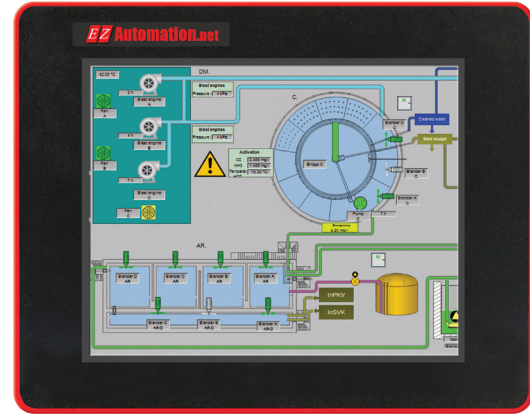
E12 Series 10" TFT Color Panels

10" Color E12 Series

E12 Series 10" panels have a 10.4" diagonal color TFT, 65k colors, 800 x 600 screen resolution, 2 Serial Ports, 2 USB Ports, Built in Ethernet, 1 MicroSD card slot. All Serial/Ethernet Drivers included

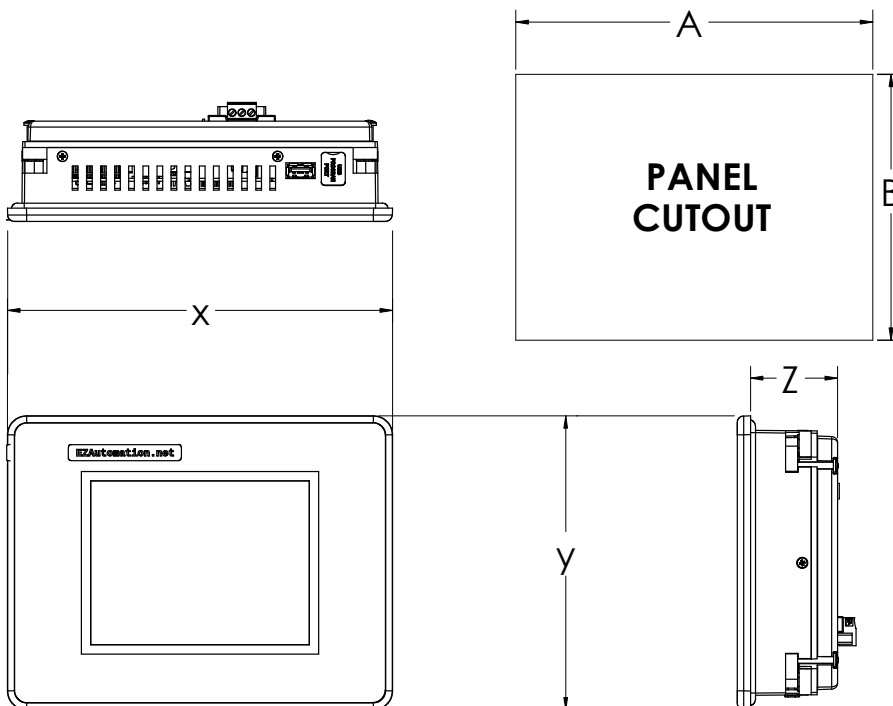
EZ12 Series Touchpanel feature:

- User level hardware & software private labeling
- All Serial and Ethernet Drivers included
- 1 Ethernet Port 10/100 Base T
- USB Type B port for programming
- USB Type A port for Data Logging and program upload
- MicroSD card slot for Datalogging
- 2 Serial Ports (1 Rs232, 1 Rs232/422/485)
- 65K Colors
- 800 x 600 pixel resolution
- NEMA 4/4X (Indoor)
- 4 Year Warranty
- 1.87" (47.60mm) installed depth
- 4,000 symbols library
- Programmed with All new EZTouch Editor



EZ12-T10C-E

EZ Touch HMI



EZ12 PANEL DIMENSIONS

| UNIT SIZE | X | Y | Z |
|-----------|----------------|----------------|--------------|
| 6" | 8.05 [204.50] | 6.15 [156.20] | 2.10 [53.34] |
| 7" | 8.05 [204.50] | 6.15 [156.20] | 1.82 [46.23] |
| 8" | 10.90 [276.76] | 8.75 [222.25] | 1.87 [47.60] |
| 10" | 13.59 [345.06] | 10.62 [269.90] | 1.82 [46.23] |

PANEL CUTOUT DIMENSIONS

| UNIT SIZE | A | B | DEPTH |
|-----------|----------------|---------------|--------------|
| 6" | 7.47 [189.73] | 5.57 [141.48] | 3.60 [91.44] |
| 7" | 7.47 [189.73] | 5.57 [141.48] | 3.32 [84.33] |
| 8" | 9.17 [232.92] | 7.04 [178.82] | 3.38 [85.68] |
| 10" | 11.87 [301.50] | 8.90 [226.00] | 3.32 [84.28] |