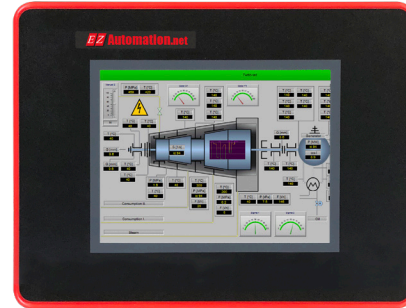


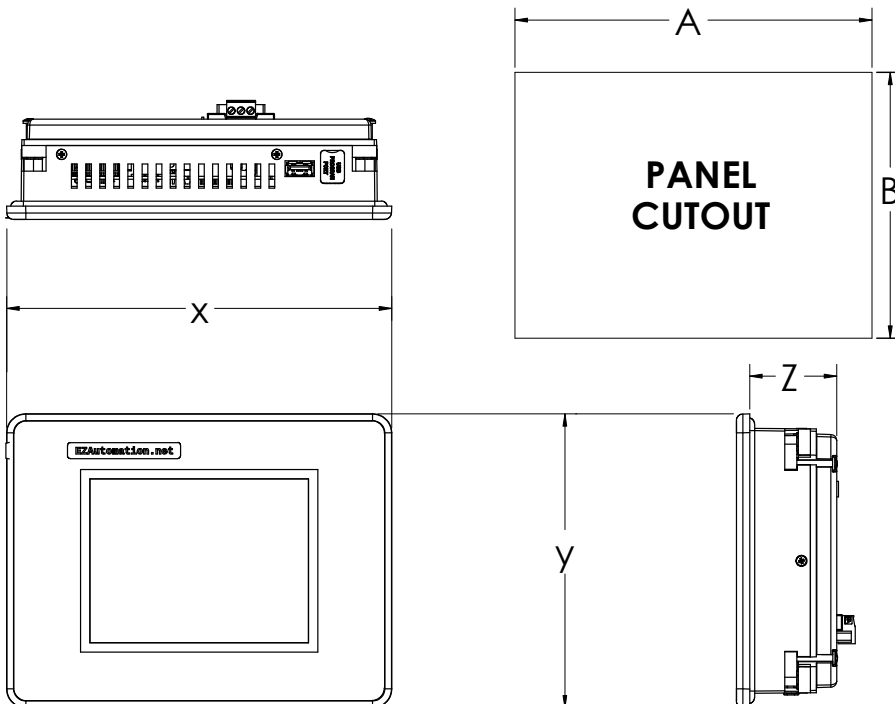
EZ12 Series 6" TFT Color Panels

EZ12 Series Touchpanel feature:

- 400 NITs, 75K Hrs @ 55°C
- 320 x 240 screen resolution
- 5.7" diagonal color TFT
- Patented HMI on-line edit, No downtime
- Patent pending mounting system that eliminates the need for separate DIN clips or studs.
- Upload HMI program from USB without software and cable
- EZTouch EZ12 HMIs have real time access to process data stored inside the HMI or the USB drive and the micro SD using AVG File Manager utility.
- EZTouch EZ12 HMIs in a plant or multiple plants have the capacity to be monitored using EZPlantview software.
- 400 NITs, 75K Hrs @ 55°C
- Best looking objects and animation with 65K colors.
- On-Screen Recipe Edit.
- Every model Fully Loaded, No "R" Reduced Features models.
- Remote Monitoring and Control, Smart phones & Ethernet.
- Communicate to all PLCs & Ethernet IP.
- Dual PLC Drivers with automatic tag conversion.
- Mfr. cost reduction & IP protection for qualified customers.
- Most Rugged 0.090" thick anti-glare touch screen.
- Unique Visibility tag for best screen space utilization.
- Unicode for multiple languages.
- Easiest Programming Software, design time in hrs not days.
- Full Project simulation on your PC. Custom start-up screen.
- "C level" scripting and logic expressions.
- Data-logging, Recipes, Emails, USBs. Free Chart recorder.
- Most advanced Alarm management and logging.
- Pass-through programming for all PLCs.



EZ12-T6C-EE



EZ12 PANEL DIMENSIONS

UNIT SIZE	X	Y	Z
6"	8.05 [204.50]	6.15 [156.20]	2.10 [53.34]
7"	8.05 [204.50]	6.15 [156.20]	1.82 [46.23]
8"	10.90 [276.76]	8.75 [222.25]	1.87 [47.60]
10"	13.59 [345.06]	10.62 [269.90]	1.82 [46.23]

PANEL CUTOUT DIMENSIONS

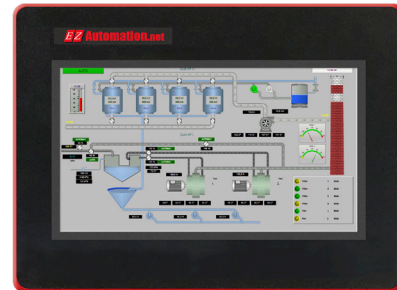
UNIT SIZE	A	B	DEPTH
6"	7.47 [189.73]	5.57 [141.48]	3.60 [91.44]
7"	7.47 [189.73]	5.57 [141.48]	3.32 [84.33]
8"	9.17 [232.92]	7.04 [178.82]	3.38 [85.68]
10"	11.87 [301.50]	8.90 [226.00]	3.32 [84.28]

Proudly Made in America

EZ12 Series 7" (Wide) TFT Color Panels

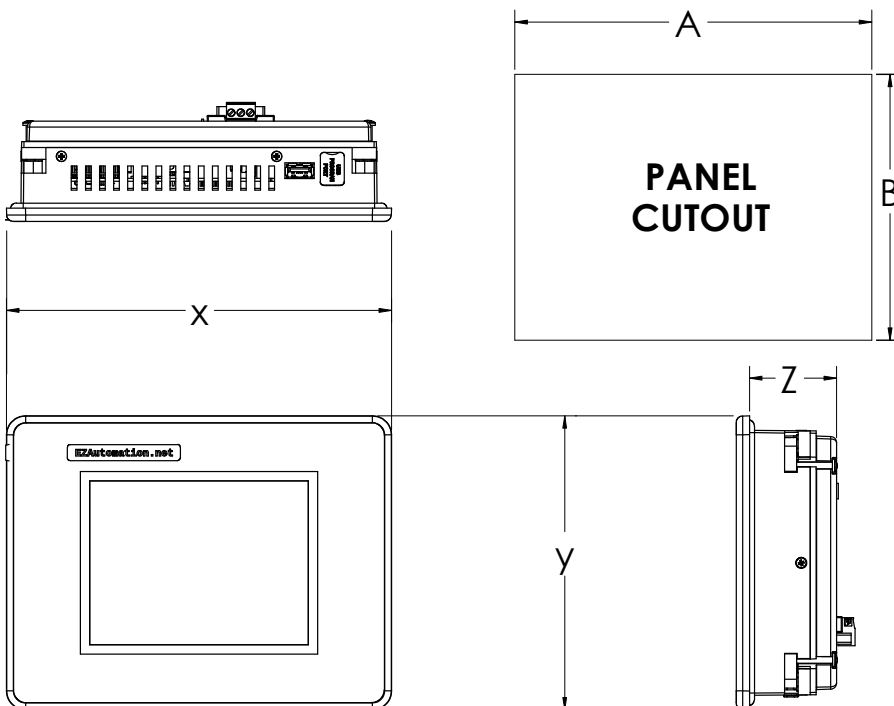
EZ12 Series Touchpanel feature:

- 400 NITs, 75K Hrs @ 55°C
- 800 x 480 screen resolution
- 7" diagonal color TFT
- Patented HMI on-line edit, No downtime
- Patent pending mounting system that eliminates the need for separate DIN clips or studs.
- Upload HMI program from USB without software and cable
- EZTouch EZ12 HMIs have real time access to process data stored inside the HMI or the USB drive and the micro SD using AVG File Manager utility.
- EZTouch EZ12 HMIs in a plant or multiple plants have the capacity to be monitored using EZPlantview software.
- 400 NITs, 75K Hrs @ 55°C
- Best looking objects and animation with 65K colors.
- On-Screen Recipe Edit.
- Every model Fully Loaded, No "R" Reduced Features models.
- Remote Monitoring and Control, Smart phones & Ethernet.
- Communicate to all PLCs & Ethernet IP.
- Dual PLC Drivers with automatic tag conversion.
- Mfr. cost reduction & IP protection for qualified customers.
- Most Rugged 0.090" thick anti-glare touch screen.
- Unique Visibility tag for best screen space utilization.
- Unicode for multiple languages.
- Easiest Programming Software, design time in hrs not days.
- Full Project simulation on your PC. Custom start-up screen.
- "C level" scripting and logic expressions.
- Data-logging, Recipes, Emails, USBs. Free Chart recorder.
- Most advanced Alarm management and logging.
- Pass-through programming for all PLCs.



EZ12-T7C-EE

EZ Touch HMI



EZ12 PANEL DIMENSIONS

UNIT SIZE	X	Y	Z
6"	8.05 [204.50]	6.15 [156.20]	2.10 [53.34]
7"	8.05 [204.50]	6.15 [156.20]	1.82 [46.23]
8"	10.90 [276.76]	8.75 [222.25]	1.87 [47.60]
10"	13.59 [345.06]	10.62 [269.90]	1.82 [46.23]

PANEL CUTOUT DIMENSIONS

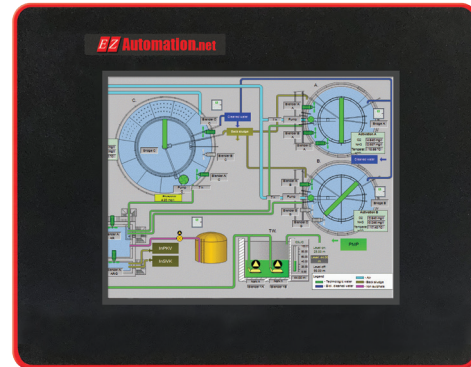
UNIT SIZE	A	B	DEPTH
6"	7.47 [189.73]	5.57 [141.48]	3.60 [91.44]
7"	7.47 [189.73]	5.57 [141.48]	3.32 [84.33]
8"	9.17 [232.92]	7.04 [178.82]	3.38 [85.68]
10"	11.87 [301.50]	8.90 [226.00]	3.32 [84.28]

Proudly Made in America

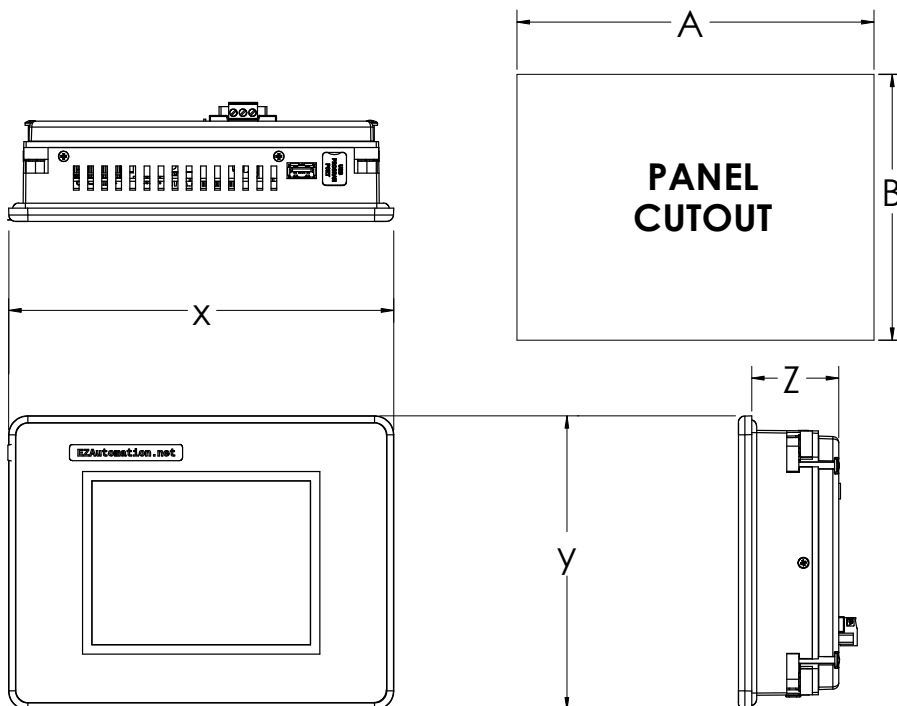
E12 Series 8" TFT Color Panels

EZ12 Series Touchpanel feature:

- 400 NITs, 75K Hrs @ 55°C
- 800 x 600 screen resolution
- 8" diagonal color TFT
- Patented HMI on-line edit, No downtime
- Patent pending mounting system that eliminates the need for separate DIN clips or studs.
- Upload HMI program from USB without software and cable
- EZTouch EZ12 HMIs have real time access to process data stored inside the HMI or the USB drive and the micro SD using AVG File Manager utility.
- EZTouch EZ12 HMIs in a plant or multiple plants have the capacity to be monitored using EZPlantview software.
- 400 NITs, 75K Hrs @ 55°C
- Best looking objects and animation with 65K colors.
- On-Screen Recipe Edit.
- Every model Fully Loaded, No "R" Reduced Features models.
- Remote Monitoring and Control, Smart phones & Ethernet.
- Communicate to all PLCs & Ethernet IP.
- Dual PLC Drivers with automatic tag conversion.
- Mfr. cost reduction & IP protection for qualified customers.
- Most Rugged 0.090" thick anti-glare touch screen.
- Unique Visibility tag for best screen space utilization.
- Unicode for multiple languages.
- Easiest Programming Software, design time in hrs not days.
- Full Project simulation on your PC. Custom start-up screen.
- "C level" scripting and logic expressions.
- Data-logging, Recipes, Emails, USBs. Free Chart recorder.
- Most advanced Alarm management and logging.
- Pass-through programming for all PLCs.



EZ12-T8C-EE



EZ12 PANEL DIMENSIONS

UNIT SIZE	X	Y	Z
6"	8.05 [204.50]	6.15 [156.20]	2.10 [53.34]
7"	8.05 [204.50]	6.15 [156.20]	1.82 [46.23]
8"	10.90 [276.76]	8.75 [222.25]	1.87 [47.60]
10"	13.59 [345.06]	10.62 [269.90]	1.82 [46.23]

PANEL CUTOUT DIMENSIONS

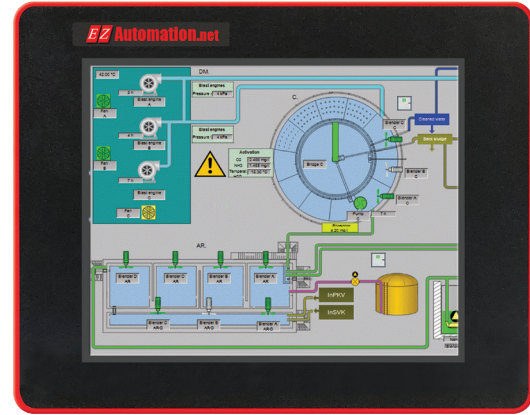
UNIT SIZE	A	B	DEPTH
6"	7.47 [189.73]	5.57 [141.48]	3.60 [91.44]
7"	7.47 [189.73]	5.57 [141.48]	3.32 [84.33]
8"	9.17 [232.92]	7.04 [178.82]	3.38 [85.68]
10"	11.87 [301.50]	8.90 [226.00]	3.32 [84.28]

Proudly Made in America

E12 Series 10" TFT Color Panels

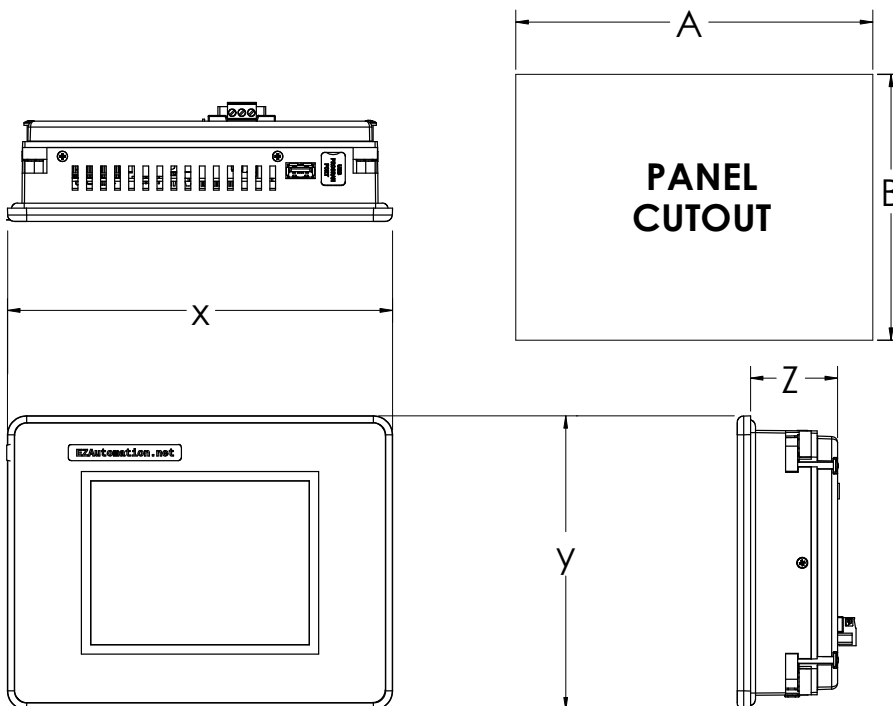
EZ12 Series Touchpanel feature:

- 400 NITs, 75K Hrs @ 55°C
- 800 x 600 screen resolution
- 10.4" diagonal color TFT
- Patented HMI on-line edit, No downtime
- Patent pending mounting system that eliminates the need for separate DIN clips or studs.
- Upload HMI program from USB without software and cable
- EZTouch EZ12 HMIs have real time access to process data stored inside the HMI or the USB drive and the micro SD using AVG File Manager utility.
- EZTouch EZ12 HMIs in a plant or multiple plants have the capacity to be monitored using EZPlantview software.
- 400 NITs, 75K Hrs @ 55°C
- Best looking objects and animation with 65K colors.
- On-Screen Recipe Edit.
- Every model Fully Loaded, No "R" Reduced Features models.
- Remote Monitoring and Control, Smart phones & Ethernet.
- Communicate to all PLCs & Ethernet IP.
- Dual PLC Drivers with automatic tag conversion.
- Mfr. cost reduction & IP protection for qualified customers.
- Most Rugged 0.090" thick anti-glare touch screen.
- Unique Visibility tag for best screen space utilization.
- Unicode for multiple languages.
- Easiest Programming Software, design time in hrs not days.
- Full Project simulation on your PC. Custom start-up screen.
- "C level" scripting and logic expressions.
- Data-logging, Recipes, Emails, USBs. Free Chart recorder.
- Most advanced Alarm management and logging.
- Pass-through programming for all PLCs.



EZ12-T10C-EE

EZ Touch HMI



EZ12 PANEL DIMENSIONS

UNIT SIZE	X	Y	Z
6"	8.05 [204.50]	6.15 [156.20]	2.10 [53.34]
7"	8.05 [204.50]	6.15 [156.20]	1.82 [46.23]
8"	10.90 [276.76]	8.75 [222.25]	1.87 [47.60]
10"	13.59 [345.06]	10.62 [269.90]	1.82 [46.23]

PANEL CUTOUT DIMENSIONS

UNIT SIZE	A	B	DEPTH
6"	7.47 [189.73]	5.57 [141.48]	3.60 [91.44]
7"	7.47 [189.73]	5.57 [141.48]	3.32 [84.33]
8"	9.17 [232.92]	7.04 [178.82]	3.38 [85.68]
10"	11.87 [301.50]	8.90 [226.00]	3.32 [84.28]

Proudly Made in America