

# EZ iMarquee® Choosing the Right Model

## How to Select the right EZ iMarquee for your application requirements

1. Determine how many lines of data are required to be displayed all at once (2 or 4 Lines Available)
2. Determine how many characters across are needed to be displayed all at once. (10, 20, or 40 characters across)
3. How far do you need to view the marquee message (100, 200, 300, or 400 ft away)? Note this will determine how many lines of data and characters can be displayed at one time depending on the marquee size selected. See Table 1 for size selection reference to the right.

## Step-by-Step EZ iMarquee Software

**Step. 1**  
Edit Program OFF-LINE or ONLINE

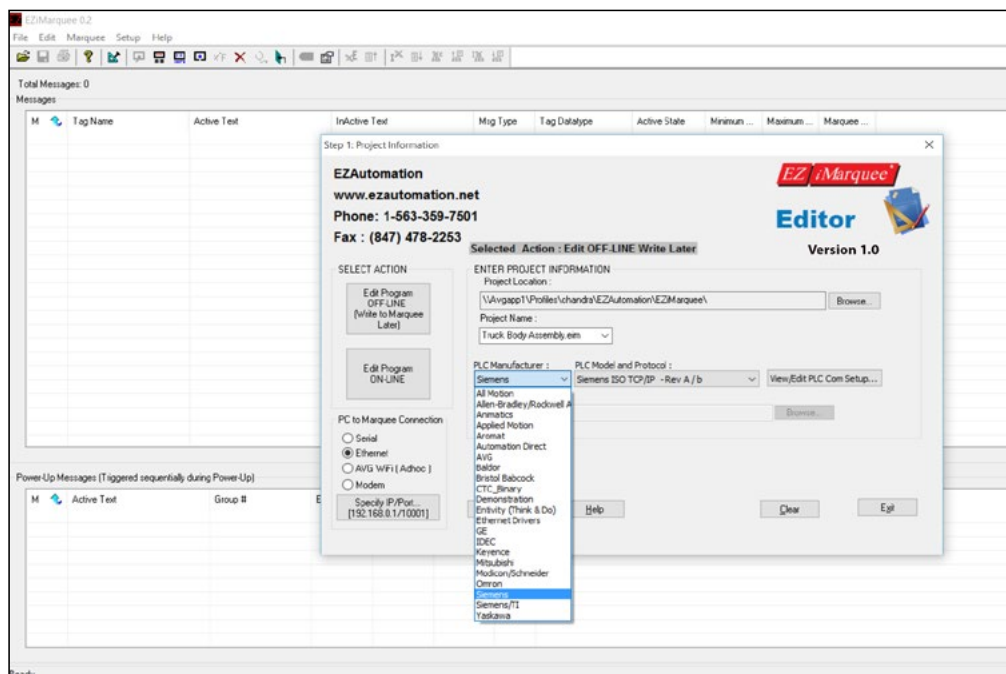
**Step . 2**  
Determine PC to Marquee Connection for programming: Serial, Ethernet or WiFi

**Step. 3**  
Assign Project Name

**Step. 4**  
Select PLC or Communications protocols to Network

**Step. 5**  
Program Messages based on PLC Tag Addresses and send/store in EZ i Marquee

Note: NO PLC Ladder Logic changes required!



# iMarquee Size Selection & Viewing Distance

## Different Sizes for Different Applications



- 2" characters - readable from 100 feet
- 4" characters - readable from 200 feet
- 6" characters - readable from 300 feet
- 8" characters - readable from 400 feet
- 8" Narrow characters - readable from 400 feet

**BIG AND BOLD**  
SEEN 400 FEET AWAY



**How far do you need to communicate?**

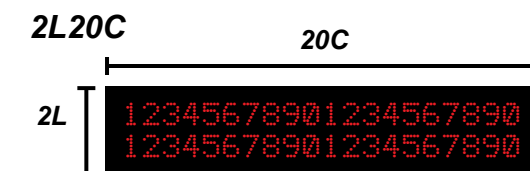
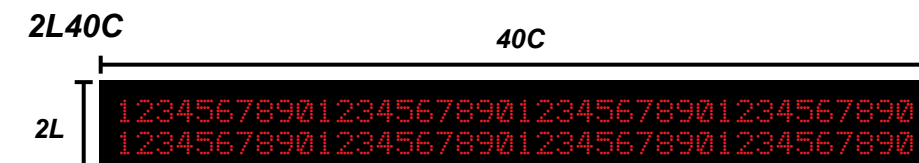
### Display Capacity

(number of characters shown at one time)

Unit	Char. Size	# of Characters per Line
2L10C	2"	2 lines of 10
2L10C	4"	1 line of 5
2L20C	2"	2 lines of 20
2L20C	4"	1 line of 10
2L40C	2"	2 lines of 40
2L40C	4"	1 line of 20
4L20C	2"	4 lines of 20
4L20C	4"	2 lines of 10
4L20C	6"	1 line of 6
4L20C	8"	1 line of 5
4L20C	8"N	1 line of 10
4L40C	2"	4 lines of 40
4L40C	4"	2 lines of 20
4L40C	6"	1 line of 13
4L40C	8"	1 line of 10
4L40C	8" N	1 line of 20

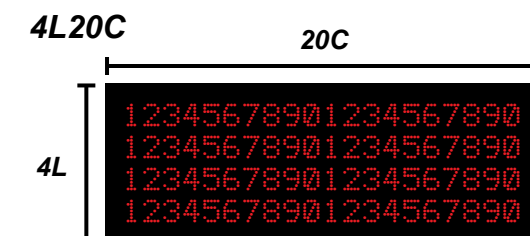
Table 1 shows all standard sizes and maximum number of lines and characters for each character height supported.

You can display characters of different heights in the same line.



1L refers to one line or "row" that equals 20 characters (each 2" high).

20C refers to 20 characters, all of which are 2" high.



EZAutomation's EZ iMarquee are available in several sizes. The smallest size is called the 2L10C as shown in the chart on the left. The other sizes are multiples of the smallest size, such as 2L20C (shown above) 2L40C (shown below), etc.